



BEACON



SCAN ME!!

An online clinical trial of brain training in people with long COVID

- Contribute to vital research into long COVID
- Join a community of people taking part in research
- Help us understand how long COVID affects the brain
- Fully ethically approved
- Compliant with all data protection laws

Join us today: beaconstudy.org.uk



University
of Exeter

NIHR | National Institute
for Health Research

BEACON

**Have you had COVID-19?
Worried about your
memory?**

Join the online BEACON
trial to take part in
cutting-edge research into
long COVID

Take part from home on
your smartphone, device
or computer



SCAN ME!!

Join us today: beaconstudy.org.uk



University
of Exeter

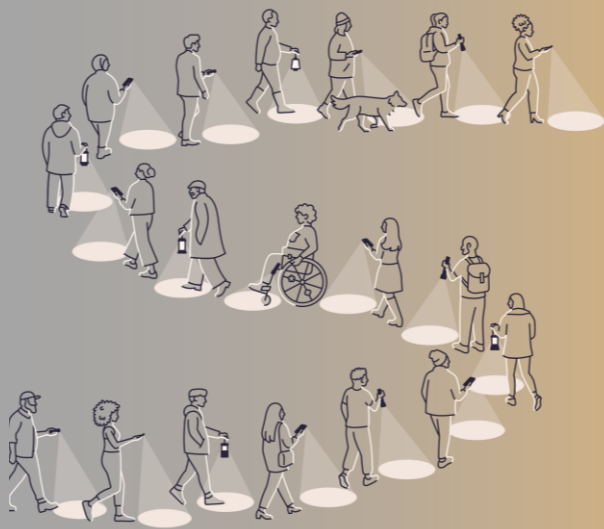
NIHR | National Institute
for Health Research

BEACON

Brain fog and memory problems affect over 80% of people after COVID-19

We want to see if our brain training programme can help

Join the BEACON trial and help improve support for people with long COVID



SCAN ME!!

Join us today: beaconstudy.org.uk



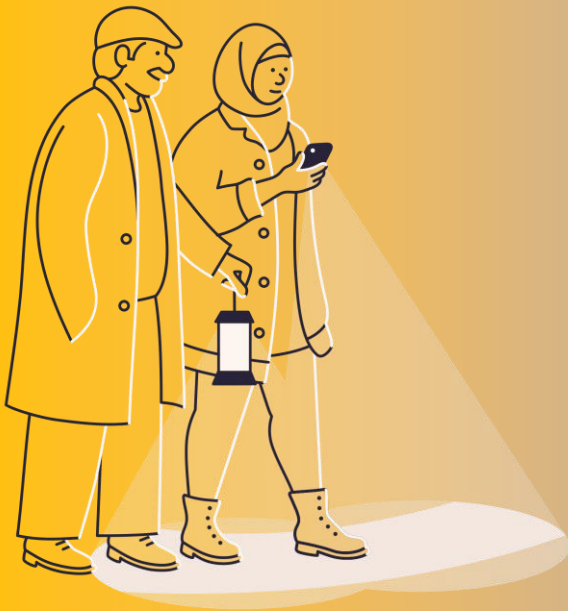
University
of Exeter

NIHR | National Institute
for Health Research

BEACON

**Are you experiencing
brain fog since
having COVID-19?**

Join the BEACON trial to
help us find out if a brain
training app can improve
your brain health



SCAN ME!!

Join us today: beaconstudy.org.uk



University
of Exeter

NIHR | National Institute
for Health Research

BEACON

An online clinical trial of brain training in people with long COVID

To be eligible you must:

- Be aged 18 or over
- Have experienced brain fog or memory problems since having COVID-19
- Have access to a computer and the internet
- Live in the UK
- Speak English



SCAN ME!!

Join us today: beaconstudy.org.uk



University
of Exeter

NIHR | National Institute
for Health Research